

*the*  
HUO FAMILY  
FOUNDATION



# Impact Report 2024

*the*  
HUO FAMILY  
FOUNDATION

*The Huo Family Foundation is a  
grant giving foundation based in  
London. Its mission is to support  
education, communities and the  
pursuit of knowledge.*

Cover photo credits:

Photo copyright © Tate (Josh Croll 2)

© LSO, Rattle Barbican, Image by Mark Allan

© University of Cambridge

© Teach for China

*Our mission and impact*

Since its inception in 2009, the Huo Family Foundation has given over \$75 million to support projects in the UK, the US, and China.

The Foundation’s mission is to support education, communities, and the pursuit of knowledge. Its current areas of focus are education, the arts, and science.

Through its grants, the Foundation hopes to improve the prospects of individuals and to support the work of organisations seeking to build a safe and successful future for all society.



© The Courtauld, Lates 2024



## *A letter from the founder*

In 2024, the Huo Family Foundation had the privilege of supporting remarkable institutions dedicated to creating meaningful change in education, science, and the arts.

This year, we were especially proud to deepen our commitment to advancing scientific research. A key focus has been funding projects that explore the impact of the use of digital technology on brain development, social interactions and mental health of children, adolescents and young adults. As young people grow up in an increasingly digital world, understanding how this emerging technology shapes their behavioural, emotional, and cognitive growth is vital. We are honoured to support groundbreaking work in this area that has the potential to influence policy and improve well-being for future generations.

We also continued our support for performing arts institutions: the Donmar Warehouse, London Symphony Orchestra, National Theatre, Royal Ballet & Opera and The Old Vic; and some of the leading galleries and museums: Courtauld Gallery, Fitzwilliam Museum, National Gallery, National Portrait Gallery, Royal Academy of Arts, Tate Galleries, The Metropolitan Museum of Art and the Victoria and Albert Museum. We continued to partner with organisations that champion access to quality education: Columbia University, Fudan University, Teach First, Teach For All, Teach For China, plus Youth Communication.

In a year marked by ongoing economic challenges and rapid technological change, philanthropy remains a vital force for progress. In the following pages, we are delighted to highlight some of the extraordinary cultural and academic organisations that we are proud to support, and the impactful work they are doing to enrich society.

We are deeply grateful for the opportunity to partner with these institutions and look forward to continuing our journey together.

*Yan Huo*

*Founder of the Huo Family Foundation*

# 2024 Beneficiaries

## Science



## Education



## Arts



# 2024 Overview

In 2024, the Foundation deepened its commitment to the arts, education, and science sectors, continuing its efforts to expand access to quality education, foster community engagement, and advance the pursuit of knowledge.

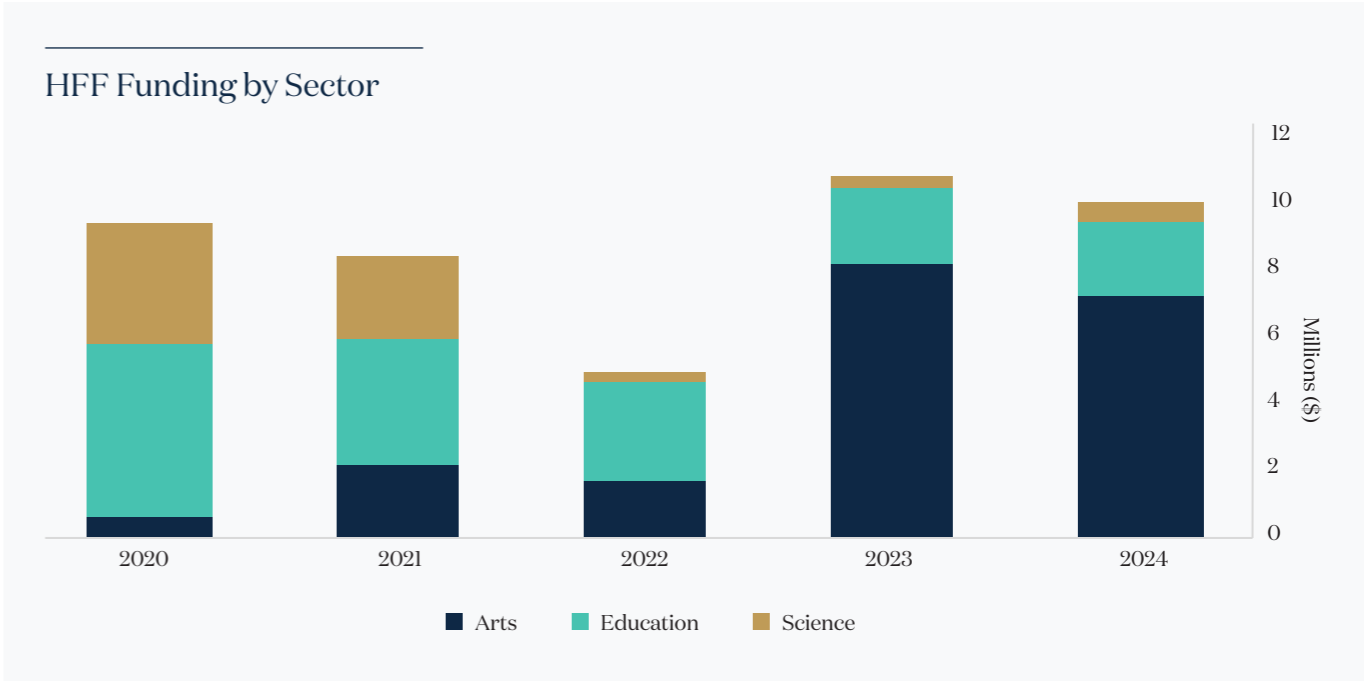
A key milestone in 2024 was the launch of our new science programme focused on the effects of digital technology on brain development, social behaviours, and mental health in young people. This major initiative aims to explore the specific causalities of the impact of digital environments and devices on the brain, mind and behaviour. By funding researchers at leading institutions in the UK and US, we hope to generate insights that will inform policy and encourage safer use of technology moving forward.

Amid ongoing government funding cuts and rising costs, the Foundation has furthered its support for the arts, with additional grants to museums, galleries, and the performing arts.

These cultural spaces are vital for the local, academic, and artistic communities, providing important professional networks and support systems. For the first time, HFF supported an exhibition at The Metropolitan Museum of Art in New York City, promoting curatorial excellence and fostering cultural exchange across the Atlantic.

We were delighted to continue our relationship with Teach First, who champion access to quality education for every child in the UK. With falling attendance levels and a scarcity of teachers, organisations like Teach First continue to play a crucial role in recruiting and transforming talented STEM educators into effective leaders who drive positive change in schools.

The Huo Family Foundation is honoured to partner with organisations who support education, communities and the pursuit of knowledge. The following pages highlight the breadth and impact of their work.





---

## Launch and Expansion of the Science Programme

In 2024, the Foundation began preparations to establish a research portfolio on the *Effects of the Usage of Digital Technology on Brain Development, Social Behaviours and Mental Health in Children and Young People*.

The rapid rise in the use of digital technology has a major impact on society and transforms the way we interact.. There has been a broad array of research that has included measures of the amount of screen time and the observed effects and impact on health. However, the full implications – both positive and negative – on human physiology, psychology, behaviour, well-being and mental health remain unclear. The Huo Family Foundation believes there is an opportunity to help advance the field of knowledge in this area.



# Science

# Small Pilot Grants

At the end of 2024, ahead of announcing the major funding call, the Foundation awarded 11 pilot grants to early-career researchers investigating the impact of digital technology on young people.

These small grants will allow the scientists to pump-prime research questions and new methodologies, collect preliminary data and form new collaborations. We hope these awards will help the researchers secure future funding from HFF or other grant-giving bodies, and to develop their careers in scientific research.

The following research projects have received funding from the Foundation.

## *Thriving in the Digital Age: Unmasking the Mechanisms of Technology’s Impact on Adolescent Development*

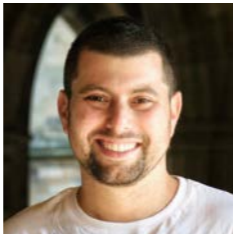
“Social media has revolutionised how young people socialise, but the online social world differs from its offline counterpart in important ways. My project integrates theory from clinical psychology with methods from cognitive and computational psychology to explore an understudied mechanism associated with mental health in the digital age: shifts to social uncertainty in online vs offline social environments, and how this impacts how young people develop beliefs about themselves, other people, and the world.”



Dr Amanda Ferguson,  
University of Cambridge

## *From Prompts to Practices: How Young People Engage with Conversational Agents for Emotional and Social Support*

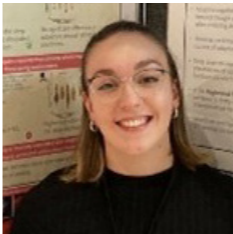
“As AI becomes more accessible and integrated into everyday life, young people are increasingly turning to conversational agents like ChatGPT for support. In this project, I’ll examine how young people prompt conversational agents for self-support, aiming to understand whether these digital habits contribute to well-being or lead to unintended consequences. I’ll also conduct a longitudinal study to track real-world conversations and emotional responses between young people and AI agents, providing a clearer picture of how these interactions shape mental health.”



Dr Guy Laban,  
University of Cambridge

## *Beyond the Screen: Unraveling the Impacts of Smartphone Use on Social, Emotional and Cognitive Functioning and Sleep in Adolescents*

“I am excited to investigate how smartphone and social media bans affect adolescents’ sleep, wellbeing, and cognitive functioning through multimethod and longitudinal approaches. This research aims to inform government policy and educate the wider community on the benefits and challenges of digital detoxes. From a career development perspective, it will enhance my expertise, help me develop new skills, and ultimately provide a strong foundation for future early-career fellowships applications.”



Dr Emma Sullivan,  
University of York

## *What drives depression in youth with high level of attention deficit hyperactivity disorder (ADHD) traits? Investigating the role of risky digital activity*

“My research project will investigate whether adolescents with high levels of ADHD traits are more vulnerable to the negative effects of online activity. However, online activity is not the only aspect of contemporary life that may influence adolescent mental health. Offline physical and social activities are also important. I hope that the findings will help to identify key opportunities for prevention to support mental health of young people with elevated ADHD traits.”



Dr Katarzyna Kostyrka-Allchorne,  
Queen Mary University of London

*Can the Explore/Exploit Trade-Off Explain Mechanisms of Social Media Use in Youth?*

“This project will help us to understand how decisions made on social media, like whether to continue watching videos recommended by an algorithm or search for new content, are related to young people’s mental health. I am particularly excited about the potential of this project to further our understanding about mechanisms involved in young people’s social media use and contribute to a nuanced debate about the benefits and risks associated with social media during these formative years.”



**Dr Alex Lloyd,**  
University College London

*InterNET use and Eating Disorders in young people: a mixed methods pilot study (NET-ED)*

“As a psychiatrist, I believe it is essential to understand patients’ online and offline worlds, in order to offer appropriate treatments. My project aims to appreciate how online activities may be related to eating disorders. I will include people with lived experience in designing the research and the project will directly interview young people with eating disorders. This will be a starting point for future work to support patients in harnessing the positive power of digital technology while recognising and minimising the risks.”



**Dr Jeremy Solly,**  
Universities of Hertfordshire  
and Southampton

*Assessing the Effect of Gaming Reduction on Physical Activity and Sleep in Young Adults with Behavioural Data*

TF: “I am particularly excited about the Randomised Controlled Trial (RCT) design. If we can achieve our target sample and detect meaningful changes in physical activity, sleep, or wellbeing, this research could pave the way for larger interdisciplinary grants exploring digital interventions in a more holistic manner.”



**Dr Tamás Földes,**  
University of Oxford

NB: “Participants will be randomly assigned to reduce gaming or continue as normal, and we’ll use data from games and from an activity monitoring watch, and how this impacts physical activity and sleep. We’re excited to advance our causal understanding of how video games affect wellbeing, and to open up new lines of research that combine behavioural data from multiple sources.”



**Dr Nick Ballou,**  
University of Oxford

*Working with adolescents to co-design methods for sleep monitoring at scale, to support future research studying the role of sleep as an important mediator of digital technology use on brain health*

“One important way that digital technology may influence brain health is through its impact on sleep. This research project will work with adolescents across six workshops, to test ways to track sleep, discuss study design, as well as collect preliminary data to enable harmonization across different sleep measurement devices. I’m excited about collaborating with adolescents, to get their ideas for future research. This will pave the way for better sleep measurement within large adolescent cohort studies.”



**Dr Eleanor Winpenny,**  
Imperial College London

*Unlocking Adolescent Insights: Evaluating TikTok Data Recruitment Through Data Download Packages and Application Programming Interfaces (APIs) for Enhanced Social Media Research*

“This funding will provide me with a solid foundation to explore innovative, scalable, real-time data collection methods for obtaining social media data donations, evaluate feasibility for longitudinal research, and advance understanding of how social media content consumption impacts adolescent health. It will also pave the way for my future work on establishing causality in this critical area, enabling me to push the boundaries of social media research and drive meaningful change in adolescent well-being in the digital age.”



**Dr Amrit Kaur Purba,**  
University of Cambridge

*Improving assessment of Smartphone Usage: Enhancing Key Data for Understanding Young People’s Mental Health*

“This research project aims to develop an innovative method to collect objectively measured smartphone usage data in young people. By analysing smartphone usage patterns, I seek to evaluate differences and agreement across data collection methodologies, offering key insights into digital behaviours and mental well-being. This grant supports the advancement of understanding in exposure measurement, bridging the gap between self-reported and objectively measured data, and ultimately guiding future research and policy on youth mental health in the digital age.”



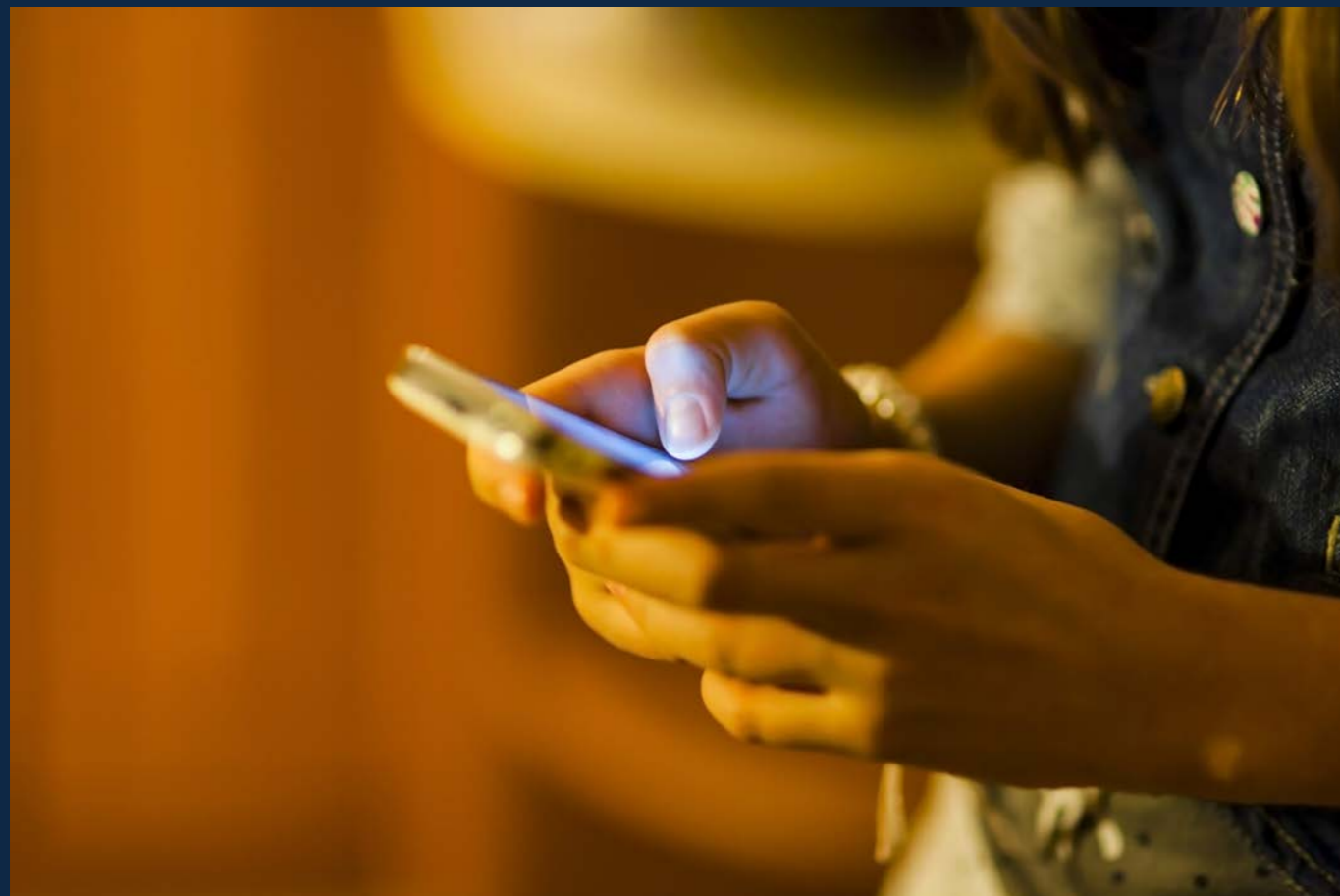
**Dr Lan Cheng,**  
Imperial College London

*Effects of technology on cognitive ability in youth*

“Technology use is now deeply embedded in everyday life from an early age, yet its impact on cognitive development remains unclear. I aim to delineate the cognitive fingerprints of technology use in a subset of children in the REACT cohort using a precision cognitive testing platform. In parallel, I will develop personalised cognitive testing tools to support future investigations in similar cohorts. By characterising these relationships, we may guide research on how to harness the benefits of digital engagement while mitigating potential harms.”



**Dr Maria Balaet,**  
King’s College London



## Inaugural Funding Call

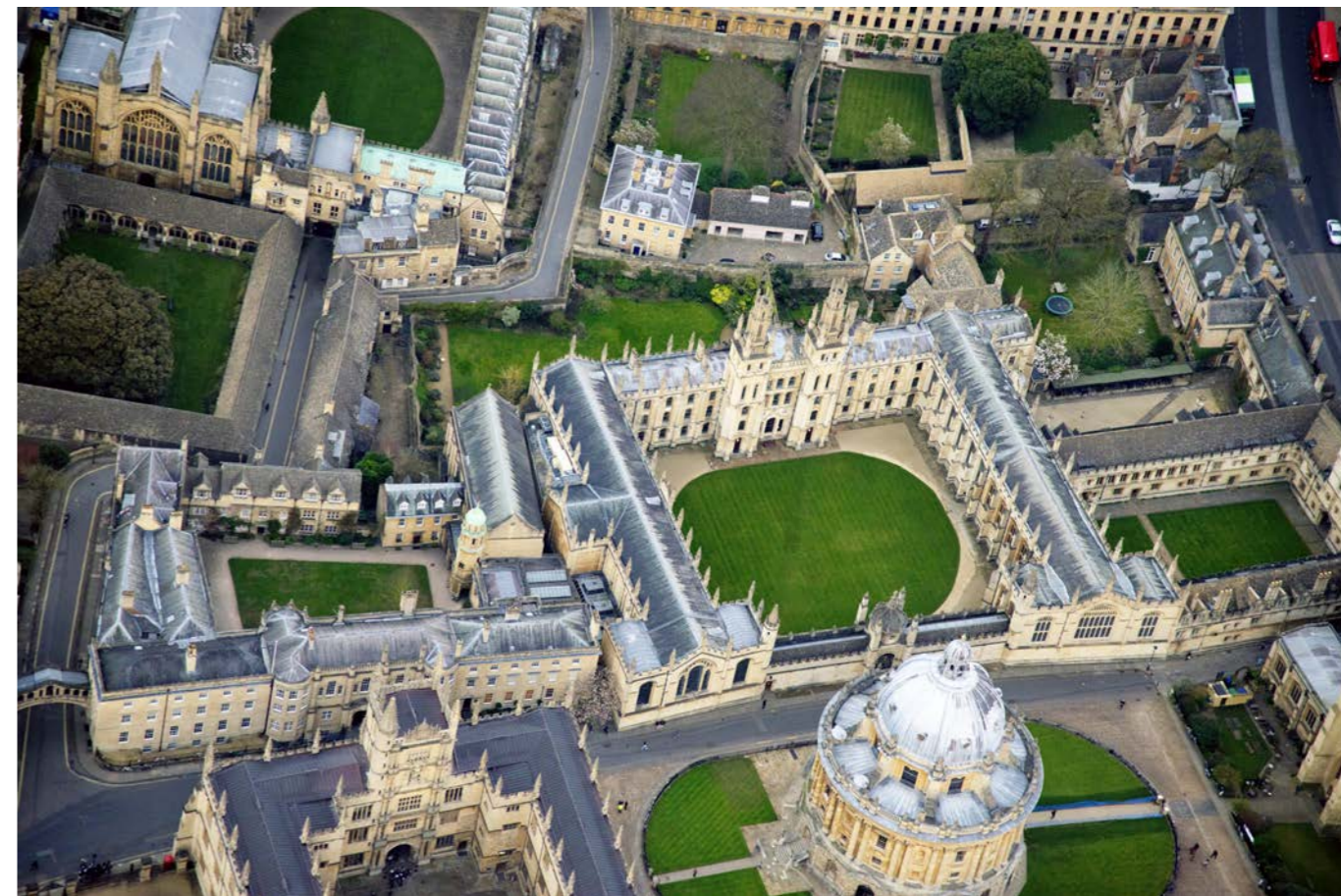
# Effects of the Usage of Digital Technology on Brain Development, Social Behaviours and Mental Health in Children and Young People

The Foundation's new science funding programme launched in early 2025, with an open call for multi-year research proposals from researchers based in the UK and in the US. The Foundation is keen to support multi-disciplinary work that attempts to understand mechanisms, causal pathways and directions.

Three types of grants are being offered:

1. **Huo Early-Career Fellowships** – up to three years - to support talented post-doctoral researchers on the path to independence.
2. **Junior Faculty Research Grants** – up to three years - to support focused research projects led by recently appointed lecturers/assistant professors.
3. **Special Projects** – up to four years – these larger and longer-term awards will allow researchers of all career stages, collaborating as a multi-disciplinary team with different expertise and skills, to take an integrated approach to tackle the most challenging questions in this domain.

After an external expert peer-review process, the first round of grants will be awarded by the end of 2025.



## Oxford Internet Institute



Since 2019, the Huo Family Foundation has been supporting the research programme led by Professor Andrew Przybylski focused on Adolescent Wellbeing in the Digital Age. For over six years, the team has been conducting research on the effects of

digital media on adolescent wellbeing and informing public policy in the sector.

In 2024, Professor Przybylski continued to evaluate and synthesize existing studies on the associations between social media use and adolescent wellbeing, and to engage industry and leading scientists in mental health research across the globe. He joined as an editorial board member of the *Instagram Data Access Pilot for Well-being Research* at the Center for Open Science in the US; a new collaboration with Meta that makes certain types of social media data accessible for research on teenage mental health.

Over the year, Dr Karen Mansfield led two intensive review studies including an in-depth systematic review of more than 20,000 leaked "Facebook Papers", and Dr Sakshi Ghai's work addressed the challenges to research on online child sexual abuse and exploitation.

Dr Matti Vuorre and Dr Kristoffer Magnusson, former OII researchers, continued to collaborate with the team: Kristoffer published a paper addressing the challenges to drawing causal inferences linking technology use to mental health; and Andrew and Matti published three papers, analysing data on social media use and mental wellbeing of adolescents.



# Education



## Teach First

In 2024, the Huo Family Foundation continued its long-term partnership with Teach First, supporting its STEM teacher recruitment and Headship programmes in disadvantaged schools in the UK.

While the recruiting environment for STEM teachers in UK schools remains challenging, Teach First has continued to adapt to attract talented graduates. 2024 marked its first year after the pandemic with a full pipeline of trainee teachers, with a final cohort of 1,415 trainees, 31% of which are teaching STEM subjects.

Due to the increasing demands and challenging working conditions of leadership roles in schools, the pipeline of talent to Headship from senior leaders remains weak, especially for women and people from minority ethnic backgrounds.

Teach First addresses this through the development of various headship networks. In 2024, the organisation welcomed 13 new heads to its 'Heads Forward' network, which now encompasses 150 ambassador headteachers, executive heads, and CEOs providing each other support.

Last year, Teach First also launched a new programme 'Aspiring Heads', selecting high potential leaders and supporting them on the journey to become head teachers in low-income communities.



## Teach For All

Teach For All fosters a global network of collaborative leadership to broaden access to education and ensure every child has the chance to reach their full potential.

Last year, Teach For All convened 63 independent organisations including new additions to the network - Teach For Palestine, Teach For Kyrgyzstan, and Teach For Uzbekistan. It also helped partners navigate challenging recruiting environments. Teach For All's network also grew, with 8,600 new teachers in 2024. Over 70% of the 105,000 alumni continue to work or study to address the systemic challenges around marginalised children.

In 2024, Teach For All continued to develop initiatives improving access to education around the world. Over the course of year, it launched the Foundational Learning Initiative with an initial focus on sub-Saharan Africa, equipping students with essential basic literacy and numeracy skills. It also developed plans to launch The Global Institute, built on the essential basic work of the Global Learning Lab. The center will provide learning resources for educators around the world, and will include a research and learning lab, an academy, a resource hub, and an advocacy arm.

## Teach For China

Teach For China selects outstanding volunteers to become full time teachers for two years in schools in underserved regions of China, including Gansu, Fujian, Guangdong, Guanhxi, and Yunnan. The Teach For China fellows gain first-hand teaching experience and help improve the resources and humanities classes in rural classrooms.

Over the course of the year, Teach For China engaged through its fellows, clubs, alumni, and programmes, with a total of 183,618 students. In 2024, the organisation recruited 883 Fellows from top universities across China and placed them in 230 schools. Over half of the Fellows focused their teaching on the humanities. Teach For China also hosted a total of 345 after-school programmes, offering students opportunities to develop personal and professional skills. This included a collaboration with artists at the 2024 Beijing Contemporary Art Expo. Their alumni network remains strong with now over 2,500 members.



## Youth Communication

Youth Communication's mission is to empower students from disadvantaged communities in New York City through the power of storytelling. In 2024, the Foundation continued to support its writing-based programmes.

Over the year, editors worked with over 50 teens to write true stories about personal challenges in their lives, helping to strengthen their literacy skills and providing support for their social and emotional development.

Youth Communication also offers story-based Social and Emotional Learning (SEL) curricula with an anthology of true stories. The curricula are accompanied by a professional development programme to assist educators strengthen their leadership skills in the classrooms. In 2024, Youth Communication partnered with 116 schools and agencies to train 1,695 educators, impacting an estimated 38,500 students.



## Columbia University

### Mailman School of Public Health

In 2024, the Foundation made its final instalment to the Huo Scholarship Fund, established in 2016. The Huo Scholarships enable the most promising students to study at Columbia University's Mailman School to pursue a career in public health. It is the only full-tuition scholarship at Columbia's School of Public Health.

Three students started their two-year Master's degree in 2024. An additional four students, admitted in the autumn 2023, moved into their second year of studies and will graduate in 2025. The five Huo Scholars who graduated in 2024, are all pursuing careers in public health, working at the Nationalities Service Center, Public Health Solutions, Center for Science in the Public Interest, Alice! Health Promotion at Columbia Health, and the NYC Department of Health and Mental Hygiene.

The grant continued to fund summer practicums for the five Huo Scholars and 15 other students who received stipends for this programme, enabling them to gain experience in unpaid roles in the public health sector over the summer at organisations including the NewYork-Presbyterian/Weill Cornell Medical Center, Federal Emergency Agency, One Brooklyn Health, NYC Commission on Gender Equity, International Rescue Committee, Colorado Department of Public Health & Environment, and South Bronx Unite.

By 2026, 25 Huo Scholars will have received full-tuition scholarships, and 100 Huo Fellows will have received funding for the summer practicums in public service.

### Columbia World Projects

The Foundation continued to support Columbia World Projects through the Huo Fellowship Fund, established in 2018. Columbia World Projects tackles complex global challenges through scholarly pursuits, leadership development, research, and social impact.

For the 2023/24 academic year, the grant was reassigned to support an initiative linked to the Columbia University Scholarship for Displaced Students (CUSDS), which provides educational opportunities to over 60 displaced students from 25 countries. The *Displaced Scholars Mental Health Study and Intervention* seeks to collect, measure and understand the mental health and wellbeing needs of displaced scholars at Columbia University. In 2024, CWP started collecting data through surveys. Qualitative interviews with former, current, and new displaced students will follow. The findings will inform the design of a mental health support programme and services to meet the needs of future displaced students.



## Fudan University

### Su Rukeng Excellence in Teaching Award

This award was established in 2022 in honour of Professor Su Rukeng, a distinguished and devoted professor of Physics. The awards are granted to professors in Physics who have shown exceptional commitment to undergraduate and graduate students.

In the past year, nine professors from the Department of Physics and Institute of Modern Physics received awards.

### Xie-Xide Chair Professorship

The Xie-Xide Professorship was established in 2015 and named after Professor Xie-Xide, a pioneering semi-conductor and surface physicist and former President of Fudan University. The professorships are awarded to researchers in Physics at Fudan University promoting research and leadership.

Seven professors from the Department of Physics were chosen for the Xie-Xide Professorships in 2024.

### International Visiting Award for Doctoral Candidates

The Huo Family Foundation continued to support distinguished PhD candidates conducting research in humanities and social sciences on short-term exchanges at top global institutions. In 2024, 15 PhD students from Fudan University were selected to spend between six and 12 months in Australia, Belgium, Canada, Japan, Switzerland, the UK and the US at leading institutions including Harvard University and the University of Cambridge.



# Endowments



## University of Cambridge

The Foundation established the P.C. Ho Scholarship Fund in 2018. Named after Yan Huo's grandfather who spent a year studying Physics abroad at the University of Cambridge in 1932, the fund allows graduate students to pursue their PhD studies at the Cavendish Laboratory.

The inaugural scholar of the P.C. Ho PhD Studentship award, Fionn Bishop, has completed her doctorate, and there are now five other P.C. Ho Scholars:

**Jiří Etrych** completed the final year of his studentship having submitted his dissertation on cold atoms. He plans to stay in Cambridge as a post-doctoral researcher in this field.

**Toby Mitchell** is in his final year, exploring spin states trapped in nano-diamonds. He submitted his dissertation reporting on a variety of experimental techniques and approaches related to nanoscale spin physics.

**Dávid Puskás** is in his second year of the studentship, studying the origins of galaxies and the earliest stages of the evolution of the universe. With the launch of the James Webb Space Telescope, David had access to the very first data on galaxy mergers and presented his research in multiple international conferences.

**Ignas Juodžbalis** completed his first year developing analysis techniques for the incoming spectroscopic data from the James Webb Space Telescope on early black holes, eventually identifying a supermassive black hole. He plans to focus on the spectroscopic signatures to develop a deeper understanding of the early formation of the universe.

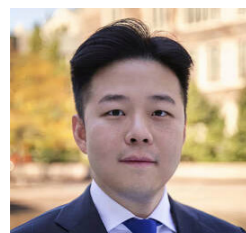
**William Brilliant** is the latest P.C. Ho Scholar to join the Scholarship team. Over the year, he has been preparing for the Terra Hunting Experiment; a project aiming to measure the frequency of Earth-like exoplanets in other solar systems and galaxies.



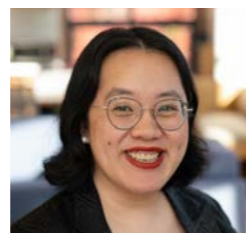
# Princeton University

## Graduate Fellowship Fund

The Huo Graduate Fellowship Fund was established in 2010 to provide Princeton University graduate students with the opportunity to conduct research focused outside the US, specifically related to China. Two scholars were selected for the 2023/24 academic year.



**Lintong Li** completed his PhD in Economics in 2024, focusing on macroeconomics, macro-finance, and labour economics, in particular the macroeconomic implications of micro-level frictions in the presence of heterogeneous households/firms and secular trends of time allocation along economic development. Lintong received his BS in Physics and BA in Economics from Peking University. After his PhD, he accepted an offer to become assistant professor at Peking University where he hopes to share his research and insights from his time at Princeton and conduct further research.

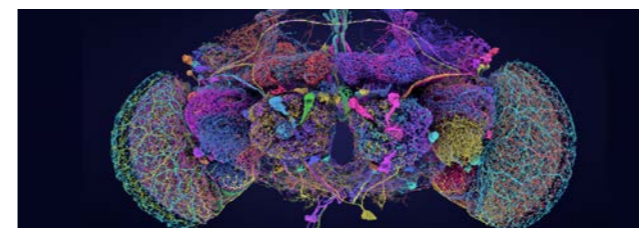


**Nancy Tang** holds a BA from Amherst College and JD from Yale Law School. She is conducting her PhD in the Department of Politics, with a focus on Chinese politics, law and social movements, gender and sexuality, and US immigration. In 2024, towards her research, Nancy conducted 13 interviews in China and Singapore. She was also invited to give guest lectures in Beijing, including one at Peking University, and attended the Law and Society Association annual conference to present her work. Later in the year, her co-authored article was published in the *Journal of Democracy*; and she was awarded the American Political Science Association Kenneth Sherrill Prize.

## Computational and Theoretical Neuroscience Fund

Established in 2015, the Fund supports research-related activities at the Princeton Neuroscience Institute (PNI) in computational and theoretical neuroscience, including computational infrastructure, graduate student support, student and faculty research, and post-doctoral fellows.

In 2024, PNI focused on research data storage systems and changes to its infrastructure to align with the university's cybersecurity efforts. These efforts included firewall maintenance and licensing to protect the research data from attacks. The Fund also continued to support several faculty research projects enabled by the computational infrastructure including BRAIN CoGS, the First 1000 Days Project, Connectomes of Mouse Brain Areas, and the FlyWire Consortium, an initiative co-led by Professors Murthy and Seung at Princeton that comprises members from more than 146 labs at 122 institutions across the world to generate the first whole map of all the brain cells and connections - the 'connectome' - for the adult fruit fly.



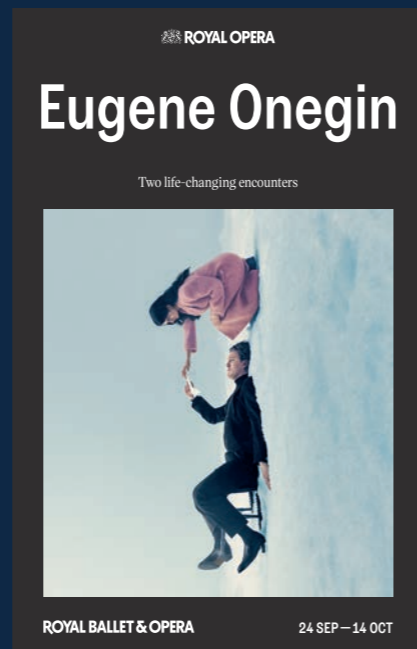
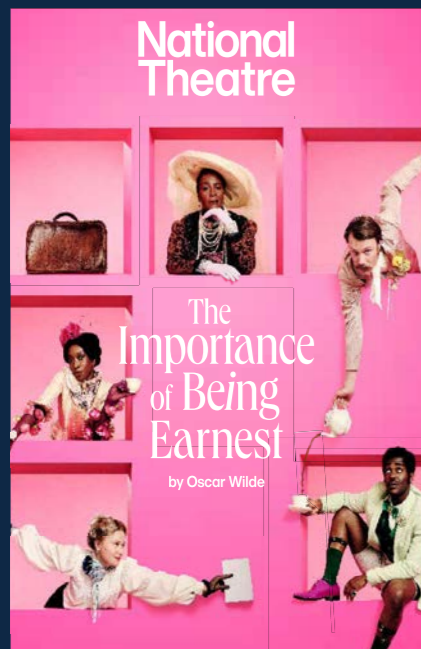
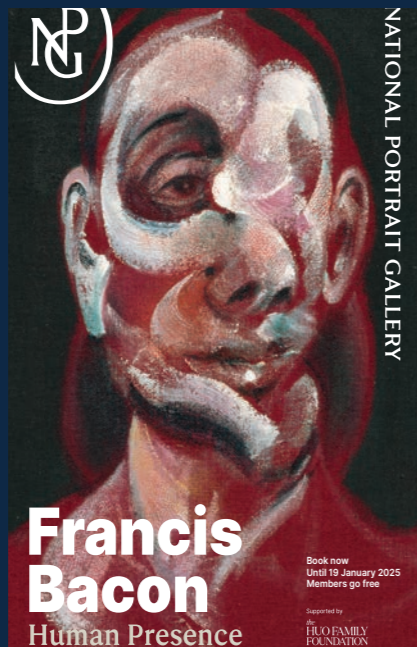
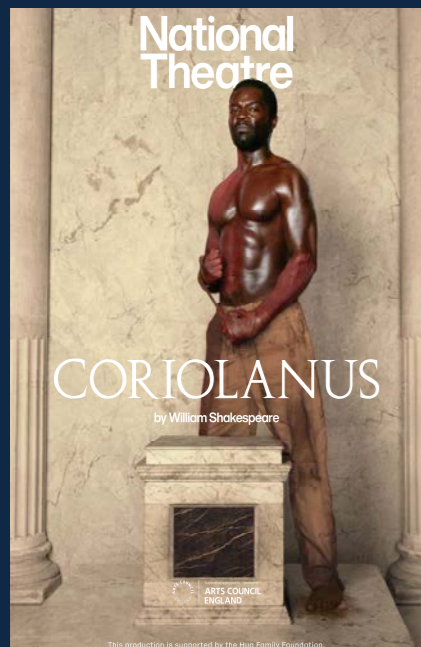
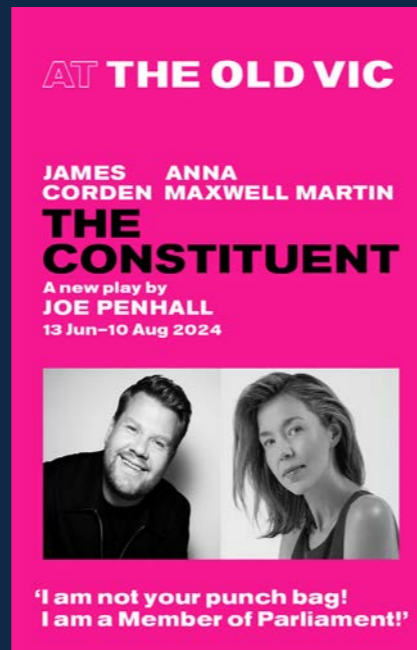
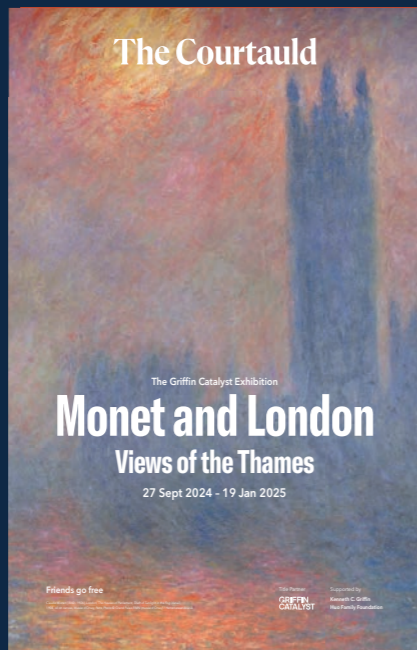
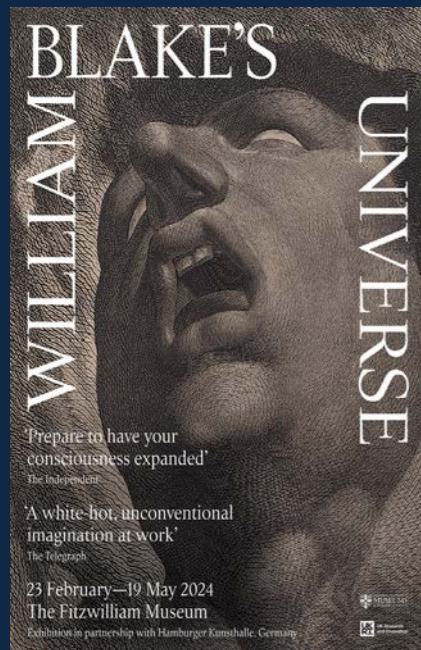
A map of the 50 largest neurons in the fruit-fly brain (FlyWire)

## Center for Information Technology Policy (CITP)

CITP, established in 2005, allows students to research how technology and society intersect and allows them to engage in public policy debates on technology-related issues. The Huo Family Foundation continued to support the programme's initiatives in 2024.

CITP's *Emerging Scholars* programme offers two-year staff positions to recent graduates, providing intensive research and work experience, along with coursework and mentoring. During the 2023/24 academic year, Princeton welcomed three emerging scholars: Nia Brazzell, Archana Ahlawat, and Nitya Nadgir. It also confirmed its fourth cohort of scholars for 2024/25: Sam Hafferty and Sophie Luskin.

The *Technology Policy Clinic* is an interdisciplinary platform that allows the CITP research community to engage in policy discussions on the role of digital technology in society. It supervises independent research projects, hosts workshops, seminars, panel discussions, and courses on tech policy issues where the research informs policy and public interest. In 2024, the clinic ran various programmes including Princeton's AI Policy Precepts, which explores the opportunities and risks underlying the technology, including AI, that will influence policymaking in the long-term. The programme was convened at the Princeton School of Public and International Affairs centre in Washington, DC.



# Arts

Rami Malek, Indra Varmma and the dancers of the Hofesh Schecter Company in Oedipus, © The Old Vic, Photography by Manuel Harlan

Visual Arts

The Metropolitan Museum of Art

In 2024, the Foundation continued to support The Metropolitan Museum of Art for the design and construction of its new Modern and Contemporary Art wing. The Oscar L. Tang and H.M. Agnes Hsu-Tang Wing, designed by Frida Escobedo, will showcase the museum’s renowned 20th- and 21st-century art collection. Currently scheduled to open in 2030, the five-story wing will expand the gallery space by almost 50 percent. The construction will create an estimated 4,000 union jobs and is on course to begin in late summer 2026.

*“Frida Escobedo’s extraordinarily inspired, deeply thoughtful, and dynamic design for the Tang Wing cements her standing as one of today’s most relevant architects. As stewards of one of the most outstanding collections of 20th- and 21st-century art, The Met has a responsibility to New York City and the world to present the art of our time in exceptionally compelling, scholarly, and innovative displays that illuminate the rich—and at times surprising—connections that can be drawn across our collection of 5,000 years of art history. Escobedo’s elegant, contemporary design reflects not only an understanding of architectural history, materiality, and artistic expression but also a deep appreciation for The Met’s mission, collection, and visitors.”*

**Max Hollein**, The Met’s Marina Kellen French Director and Chief Executive Officer.

The Museum continued to fundraise for the new Wing throughout the year. In May 2024, it announced it had secured \$550 million in private donations, showcasing the strong support from both new and long-standing local and international Trustees and donors.



Exterior rendering of The Metropolitan Museum of Art’s Tang Wing (view from the southwest corner) Visualization by © Filippo Bolognese Images, courtesy of Frida Escobedo Studio



Duccio di Buoninsegna (Italian, active by 1278–died 1318 Siena), *Madonna and Child*, ca. 1290–1300. Tempera and gold on wood, Overall, with engaged frame, 11 x 8 1/4 in. (27.9 x 21 cm); painted surface 9 3/8 x 6 1/2 in. (23.8 x 16.5 cm). Purchase, Rogers Fund, Walter and Leonore Annenberg and The Annenberg Foundation Gift, Lila Acheson Wallace Gift, Annette de la Renta Gift, Harris Brisbane Dick, Fletcher, Louis V. Bell, and Dodge Funds, Joseph Pulitzer Bequest, several members of The Chairman’s Council Gifts, Elaine L. Rosenberg and Stephenson Family Foundation Gifts, 2003 Benefit Fund, and other gifts and funds from various donors, 2004 (2004.442)

In 2024, the Foundation also made its first grant to an exhibition based outside the UK, supporting The Met’s show *Siena: The Rise of Painting, 1300-1350*. The show, on display from October 2024 to January 2025, was co-curated by Stephan Wolohojian, John Pope-Hennessy Curator in Charge of the Department of European Paintings since 2021. The exhibition reunited masterpieces to reveal the wide-reaching influence and legacy of Sienese painters of the 14th century including works by Duccio di Buoninsegna, Pietro Lorenzetti, Ambrogio Lorenzetti, and Simone Martini. It received stellar reviews from *The Art Newspaper*, awarding it 5 stars: “Reuniting the surviving sections of the city’s altarpiece marvel is just the start of this important, beautifully staged show at New York’s Metropolitan Museum of Art.” *The New York Times* described it as “a visual event of pure 24-karat beauty and a multileveled scholarly coup.”



## National Portrait Gallery

The Foundation's first grant to the National Portrait Gallery supported two major 2024 exhibitions.

Curated by Ekow Eshun, *The Time is Always Now*, looked at the representation of the Black figure in contemporary art and its presence and absence in Western art history. The exhibition, on display from February to May, presented artworks by 22 artists, including Lubaina Himid, Kerry James Marshall, Claudette Johnson, Noah Davis, and Barbara Walker. The show was well received with positive reviews from the press and the public, including five stars from *The Guardian*: "The presence, and absence, of black figures in western art is turned on its head in an exhilarating showcase of 21st-century artists from the African diaspora". The exhibition positively impacted the community, attracting over 600 school children and student visitors, and empowering teachers to bring the exhibition's themes and artistic practices into their classrooms.

*Francis Bacon: Human Presence*, which opened in October 2024 and closed in January 2025, focused on the artist's take on portraiture throughout his career, and his challenging of the traditional definitions of the genre. The wide range body of works included self-portraits and portraits of friends and lovers. The show was critically well received with five star-reviews and being described as "a brilliant transgressive party" (*Financial Times*) and "a magnificent and gripping exhibition" (*The Times*).

## National Gallery

In 2024, the Foundation continued its partnership with the National Gallery with a grant to support two exhibitions.

*The Last Caravaggio*, open from April to July 2024, gathered for the first time two important paintings by the Italian Baroque artist, highlighting the dramatic and violent final years of his life. The exhibition presented the artist's masterpiece *The Martyrdom of Saint Ursula*, 1610, from the Gallerie d'Italia, Naples, in London for the first time in 20 years, alongside the Gallery's own Caravaggio, *Salome with the Head of John the Baptist*, 1609-10. The show was very popular, attracting 286,000 visitors over the 65-day run, and received five stars from critics.

The Foundation also contributed to the National Gallery's exhibition *Siena: The Rise of Painting, 1300-1350*, which opened in March 2025, after its display at The Metropolitan Museum of Art. Co-curated by Stephan Wolohojian from The Met, and Laura Llewellyn from the National Gallery, the exhibition is a major highlight in the Gallery's 200 Bicentenary programme and will mark the conclusion of their anniversary celebrations. The show received glowing reviews with *The Times* describing it as a 'curatorial coup' and five stars from *The Guardian*: "Conquering the heart is what Martini and other 14th-century painters from Siena do in the National Gallery's devastatingly exact, epochal exhibition about the moment western art came alive."



## Victoria and Albert Museum

In 2024, the Foundation started a new partnership with the Victoria and Albert Museum supporting exhibitions in two of its sites:

*The Great Mughals: Art, Architecture and Opulence* presented at the museum's South Kensington location from November 2024 to May 2025, showcased the evolution of Mughal art during the age of its most famous emperors who reigned from 1560 to 1660. Through a variety of 300 rich artefacts, many of which are from the museum's own collection, the show focused on a historical moment when creativity thrived through the cultural exchange of Iranian, Hindustani, and Christian traditions. The show was positively received, described as a "treasure trove of surpassing beauty" (*The Times*) and is expecting over 175,000 visitors by its closing date.

*The Music is Black: A British Story*, will be the inaugural exhibition at the V&A East Museum in Spring 2026. Displayed in the new site at Queen Elizabeth Olympic Park in Stratford, the exhibition will celebrate 125 years of Black British music. The exhibition will highlight the extensive global impact of Black British music genres and artists from 1900 to the present day. Curated by Jacqueline Springer, it will feature a diverse collection of items from British and African diasporic artists, performers, and designers, and expects around 250,000 visitors.

## Royal Academy of Arts

The Foundation continued to support the Royal Academy of Arts, sponsoring two exhibitions:

*Michelangelo, Leonardo, Raphael: Florence, c. 1504*, on display from November 2024 to February 2025, highlighted the relationship between the three artists during a short but pivotal time in the Renaissance and their influence on each other's works. The show was a critical success receiving four stars from *The Times* that described it as "a miraculous show" and five stars from *The Standard* writing that it was: "a gem of a show, a testament to staggering genius." The exhibition also highlighted the only marble sculpture by Michelangelo in Great Britain from the Royal Academy's own collection.

*Kerry James Marshall*, to open in autumn 2025, will be a major show of the internationally acclaimed contemporary American artist and his first retrospective in the UK. His body of work focuses on the representations of Black figures throughout history and in daily life. The exhibition, featuring 79 works, will be organised thematically rather than chronologically. It will include a range of works painted from the early 1980s to a recent series made especially for the show.



## Courtauld Gallery

The Foundation furthered its long-standing partnership with the Courtauld Gallery, as its exhibition series Lead Partner. It previously supported critically acclaimed exhibitions on contemporary artist, Peter Doig, in 2023, and German expressionist, Frank Auerbach, in early 2024.

In 2024, the Foundation made a grant to support *Monet and London: Views of the Thames*. The exhibition highlighted a group of 21 paintings capturing the French impressionist's view of the Thames during his stay at The Savoy Hotel (a few feet away from the Courtauld) from 1899 to 1901.

This exhibition, curated by Dr Karen Serres, marked the first time the series was presented as whole in the U.K. On display from September 2024 to January 2025, the show was extremely successful with sold out tickets, and five star-reviews from *The Times* ("Monet knocks your socks off") and *The Guardian* ("This exhibition makes a strong case that it all started here. It lets you see the moment a great artist became a great modernist.")

The exhibition also highlighted the work of the Courtauld's conservation studios as it collaborated with the National Trust to examine and restore one of Monet's paintings *Charing Cross Bridge*, 1902, originally gifted to Winston Churchill, ahead of being displayed in the show.



William Blake's Universe at the Fitzwilliam Museum, © University of Cambridge, photo by Thomas Adank



The exhibition Zanele Muholi, supported by HFF, in 2022, was on display from 6 June 2024 to 26 January 2025. Photo © Tate (Sidora Bojovic)

## Fitzwilliam Museum

The Foundation supported its first exhibition at the University of Cambridge's Fitzwilliam Museum in 2024.

*William Blake's Universe*, on display from February to May 2024, showcased works from the museum's Blake collection alongside loans of Blake's contemporaries including Philip Otto Runge, Caspar David Friedrich, and John Flaxman, some of which had not previously been seen in the UK. The exhibition focused on Blake's position amongst his European peers in the face of historical and political turmoil of the 18th century. This show, which also travelled to partner institution Hamburger Kunsthalle, was attended by over 50,000 visitors.

## Tate Galleries

The Huo Family Foundation continued its partnership with Tate Modern in 2024, supporting one of their upcoming exhibitions. *Hurvin Anderson* will be opening in March 2026 and will present the first major solo national show for the contemporary British and Jamaican artist in the UK. His body of work ranges from landscapes, to still life and portraits, exploring themes around community, art history, and colonial history. The exhibition is curated by Dominique Heyse-Moore, Senior Curator of Contemporary British Art, and Jasmine Chohan, Assistant Curator Contemporary of British Art, and is expected to attract over 100,000 visitors.



## Performing Arts

### Royal Ballet & Opera

In 2024, the Huo Family Foundation continued its support of the 2023/24 productions of *Rigoletto*, *Carmen*, and *Swan Lake*, and an additional three new productions for the 2024/25 season *Eugene Onegin*, *Alice's Adventures in Wonderland*, and *Les Contes d'Hoffman*.

Despite a 20% funding cut from the Arts Council, the Royal Ballet & Opera (RBO) continued to deliver an exceptional programme with a total of 425 performances across 57 productions. With over 673,000 tickets sold over the year, 52% of ticket bookers were new to the Royal Ballet & Opera. The RBO continued to champion cultural accessibility through their Young RBO ticketing scheme, with 18,000 ticket sales in 2024, of which c.20% were under 30.

The theatre remained at the centre of creative excellence and experimentation. The Foundation sponsored *Tales of Hoffman* directed by Damiano Michieletto which offered a modern and fresh take of the revered opera. Tchaikovsky's *Eugene Onegin* was Ted Huffman's Main Stage directorial debut experimenting with a minimalistic aesthetic and abstract time period.

In 2024, three Royal Ballet & Opera dancers were granted National Dance Awards, and RBO's opera *Innocence* received an Olivier award for Best Opera.

After more than a century of being known as the 'Royal Opera House', the theatre underwent a rebranding to better reflect its diverse programming, adopting the new name 'Royal Ballet & Opera.'



### London Symphony Orchestra

The Foundation continued its support of the LSO, sponsoring three concerts in its 2023-2024 season (*Bartok/Ades/Beethoven*, *Brahms/Shostakovich*, and *Shostakovich/Orff*) and a new series of three concerts in 2024-2025 (*Berlioz/Rachmaninoff/Saint-Saens*, *Liszt/Mendelssohn/Schubert*, and *Maconchy/Walton/Vaughan Williams*). Four of the concerts took place in 2024, each highlighting the LSO's commitment to musical excellence and its mission to make music accessible to all.

A notable highlight was Johannes Brahms' *Violin Concerto* and Dmitri Shostakovich's *Symphony No 4*, conducted by Sir Simon Rattle and violinist Isabelle Faust. The concert was one of the most successful performances of the season, with a sold-out auditorium of 1,800 and received five-star reviews: "it was proof, if anyone actually needs it, that this art form can reach into every crevice of the soul" (*The Telegraph*).

The LSO also continued to provide two initiatives that address the lack of diversity in UK orchestras. The East London Academy offers training for talented 11- to 18-year-old musicians. In 2024, 46 young musicians from East London received coaching, professional development, and performance opportunities, including performing at LSO's annual free open-air concert in Trafalgar Square alongside 25 LSO musicians and 16 players from the Guildhall School of Music and Drama. In addition, their two-year programme, LSO Pathways, supported 12 talented emerging orchestral musicians, providing them with individual music lessons, opportunities to watch rehearsals, and to attend LSO concerts.



## National Theatre

The Foundation continued its commitment to the National Theatre with another grant in 2024. The two sponsored productions were *The Grapes of Wrath* and *The Importance of Being Earnest*.

*The Grapes of Wrath*, an adaptation of the John Steinbeck Pulitzer Prize novel published in 1939 about the great depression, focused on an Oklahoma family in search for work opportunities in California and their difficult journey as they join the Dust Bowl migration. The show was described as “*brutally beautiful*” (*The Financial Times*). In line with the theatre’s mission, the National sold over 11,000 tickets at £20 or less to make it accessible for schools and 16–25-year-olds. The play was also categorized as a ‘Curriculum Resonant’ title as it offered young people a range of opportunities to explore theatre-making.

Oscar Wilde’s *The Importance of Being Earnest*, directed by Max Webster was a colourful and musical reimagining of the comedy, featuring Olivier award-winner Sharon D Clarke, and Ncuti Gatwa. It was well received by the press and audience, it was described as: “*a Wilde party of irresistible anarchic charm*” (*The Guardian*).

## The Old Vic

In 2024, the Foundation continued to support The Old Vic’s Public Fund, helping the development of two productions: *The Constituent* and *Oedipus*. *The Constituent*, starring Anna Maxwell Martin and James Corden, took place during the UK General election and addressed the relationship between an MP and a violent constituent, highlighting the risks of working in public service. 64,000 people watched the play, of which 49% were first-time bookers.

*Oedipus* debuted on The Old Vic’s stage in January 2025 and closed in March. Featuring Rami Malek and Indira Varma as the leading figures, the play was co-directed by Hofesh Shechter and Matthew Warchus. It offered a modern take on Sophocles’ Greek tragedy with contemporary dancing. *The Times* wrote that “*It’s gunning for something vast and the effect burrows its way into your body. Not easy to fathom, not easy to forget.*”

In 2024, The Old Vic continued to engage with its neighbouring communities, working with 6,328 people over the 2023/24 season through their free-to-access workshops and events offered across their Schools, Community, and Emerging Theatre Professionals activities. While the theatre industry is still recovering from the pandemic and funding cuts, The Old Vic attracted almost 280,000 visitors, achieving a 92% seating capacity.

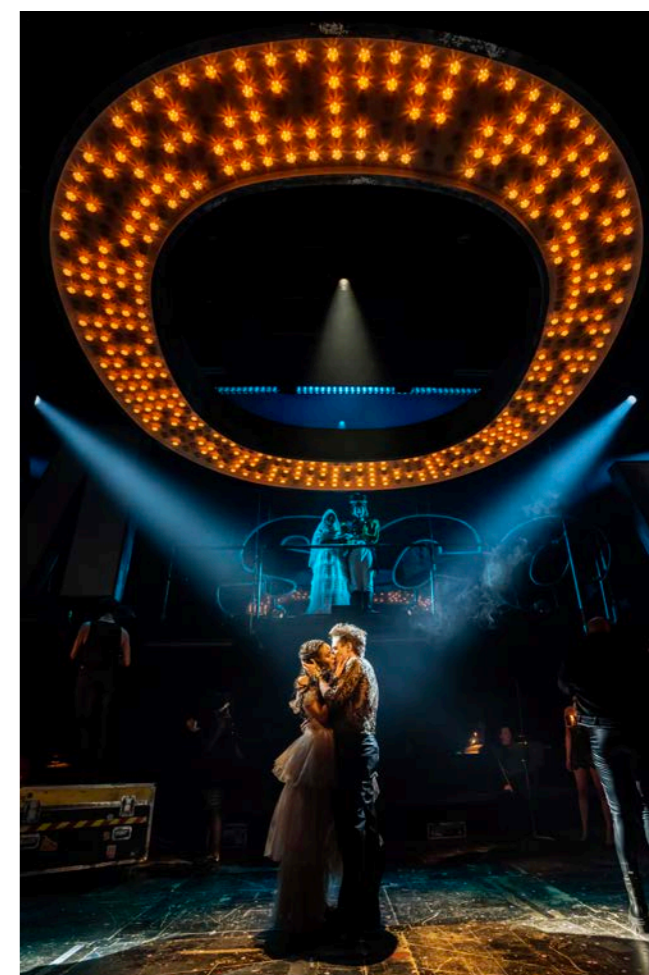
## Donmar Warehouse

In 2024, the Foundation continued its partnership with the Donmar through its multi-year grant in support of its productions. In the past year, the Donmar attracted over 215,000 people to its seven productions including *The Fear of 13*, *The Cherry Orchard* and *Natasha, Pierre and the Great Comet of 1812*. Featuring world-renown actors to their stage including Adrien Brody, Adeel Akhtar, David Tennant and Cush Jumbo, the Donmar’s productions received nine Olivier Award nominations, and two, *Next to Normal* and *Macbeth*, transferred to the West End.

The Donmar remains engaged with its local and artistic communities through its programmes Catalyst, Resident Assistant Director, and Donmar Local. In 2024, the Donmar worked with 17 out of 22 state secondary schools in Camden and Westminster. Their initiatives such as Schools’ Tour, Take the Stage and Pathways introduced young people to world-class theatre, developed youth voice and identity, and helped them to access careers in the creative sector.



Hugh Skinner and Ncuti Gatwa in *The Importance of Being Earnest* at the National Theatre. ©Photo by Marc Brenner



Chunisa Dorfod-May and Jamie Muscato in *Natasha, Pierre & The Great Comet of 1812* - Donmar. © Photo by Johan Persson



You can find these *In Conversation With* interviews conducted with our beneficiaries in 2024, along with those of previous years, by scanning the QR code.

# Our partners

In 2024, as part of our *In Conversation With* series, the Huo Family Foundation had the opportunity to engage with 12 of its grant recipients. These published discussions showcase their impactful work and demonstrate the positive influence of the Foundation’s support across diverse communities.

## Education



**Sixian Lu**  
International Visiting Scholar at Fudan University



**Nitya Nadgir**  
CITP Emerging Scholar at Princeton University



**Annabel Shi**  
Fundraiser and Former Fellow at Teach For China



**Dávid Puskás**  
Scholar of the P.C. Ho PhD Studentship at the University of Cambridge

## Science



**Gary Wilson**  
Director of Research at the Huo Family Foundation

**Paul Elliott**  
Academic Lead and Advisor to the Huo Family Foundation, via Imperial Consultants

## Arts



**Sarah Howgate**  
Senior Curator of Contemporary Collections at the National Portrait Gallery



**Laura Stevenson**  
Executive Director of The Old Vic



**Yu-Ping Luk**  
Basil Gray Curator: Chinese Paintings, Prints and Central Asian Collection at the British Museum



*Natural History Museum:*  
**Charlotte Stone**  
Head of Exhibitions & Galleries

**Susan Holmes**  
Exhibitions & Interpretation Manager



**Stephan Wolohojian**  
John Pope-Hennessy Curator in Charge of the Department of European Paintings at The Metropolitan Museum of Art

**Laura Llewellyn**  
Curator of Italian Paintings before 1500 at The National Gallery, London



**David Breslin**  
Leonard A. Lauder Curator in Charge of the Department of Modern and Contemporary Art at The Metropolitan Museum of Art



**Jane Desborough**  
Keeper of Science Collections at the Science Museum



## Team

*CEO*

Rebecca Stewart  
[rebecca@huofamilyfoundation.org](mailto:rebecca@huofamilyfoundation.org)

*Director of Research*

Gary Wilson  
[gary@huofamilyfoundation.org](mailto:gary@huofamilyfoundation.org)

*Programme Officer*

Julia Drayson  
[julia@huofamilyfoundation.org](mailto:julia@huofamilyfoundation.org)

*Finance Director*

Brett Pachonick  
[brett@facultyroad.com](mailto:brett@facultyroad.com)

*Financial Controller*

Natalie Sawaryn  
[natalie@facultyroad.com](mailto:natalie@facultyroad.com)

## Trustees

*Yan Huo*

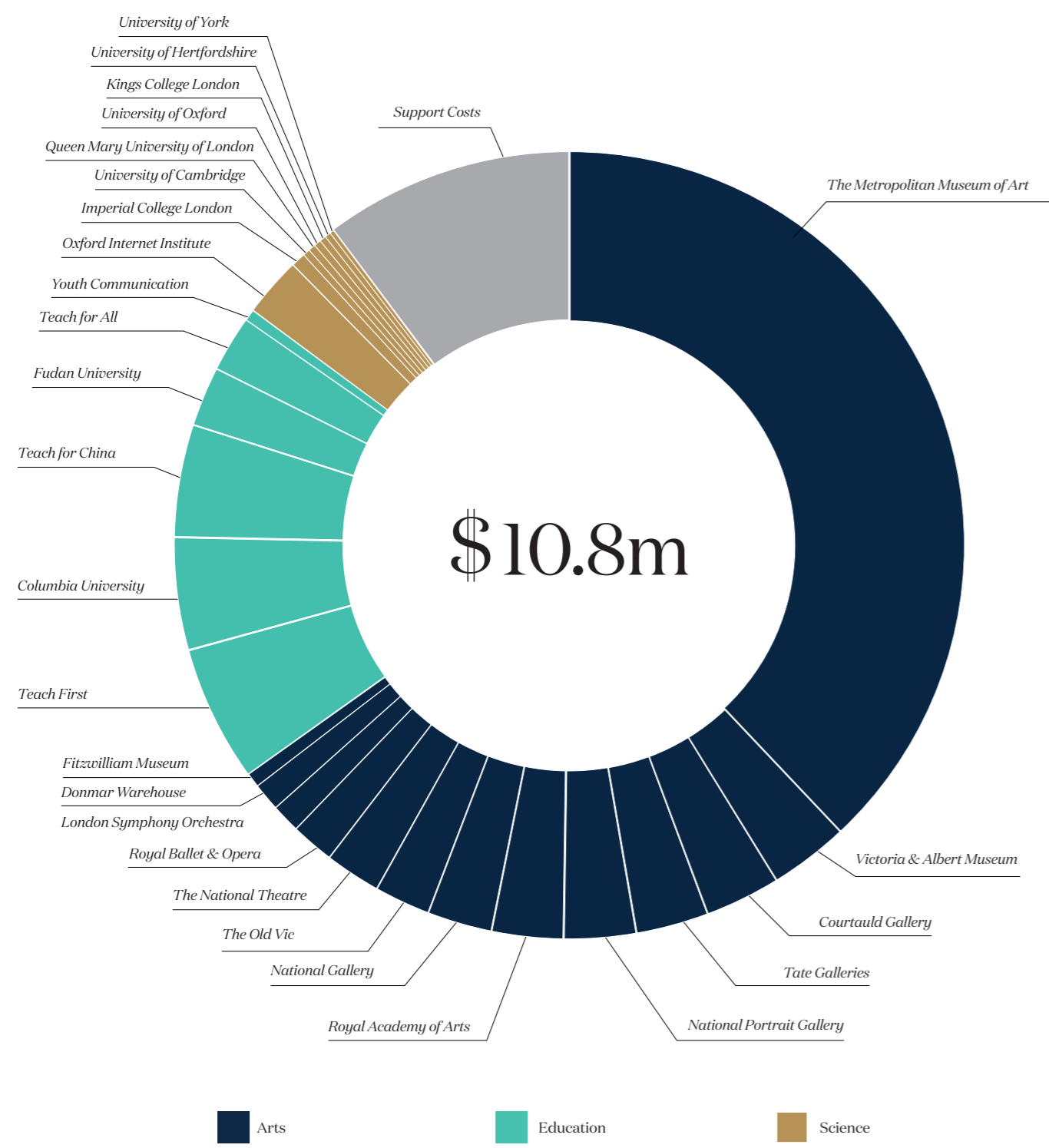
*Nancy Montmarquet*

*Sam Lowe*

*Yu Qiao*

*If you have any questions about the Huo Family Foundation, please get in touch.*

# 2024 Expenditure



*the*  
**HUO FAMILY  
FOUNDATION**

7 Clarges St  
London, W1J 8AE  
[info@huofamilyfoundation.org](mailto:info@huofamilyfoundation.org)  
[www.huofamilyfoundation.org](http://www.huofamilyfoundation.org)  
Charity number: 1133206



Printed on 100%  
recycled material